

# HAM RAG



Visit our website for more club and area ham information  
In the Rockford area at <http://w9axd.org>

## May 2007

### President's Corner

NEXT MONTH IS FIELD DAY AND OUR BREAKFAST IN THE PARK. I AM LOOKING FORWARD TO BOTH. NOW THAT THE WEATHER IS WARMING UP ITS TIME TO GET ALL THOSE ANTENNA SUPPORTS, GROUNDING, AND ALL OF OUR OUTSIDE CONNECTIONS CHECKED FOR DAMAGE AFTER THE WINTER AND SPRING DE-FROST.

#### ISS CONTACT:

WOW, WHAT AN EVENT! I HAD A BLAST HELPING WITH THAT. THOSE KIDS WERE SO EXCITED TO HEAR SUNNI OVER THE RADIO. I THINK EVERYTHING WENT VERY WELL WE HAD EXCELLENT SIGNAL STRENGTH FROM THE ISS AND THE QUESTIONS FLOWED VERY WELL. SUNNI WAS VERY LONG WINDED THAT DAY, SO THE STUDENTS GOT SOME REAL GOOD ANSWERS. OVERALL IT WAS A GREAT SUCCESS AND I THINK ALL OF THOSE WHO HELPED OUT. WITHOUT ALL OF YOUR HELP AND SUPPORT THIS COULD NOT HAVE BEEN DONE.

THANKS!  
DON RUSSELL  
KB9AYF

#### Inside this issue:

|                           |    |
|---------------------------|----|
| President log             | 1  |
| VP Log                    | 2  |
| Secretary Log             | 3  |
| 2007 Club Board           |    |
| Amateur Radio Exam Notice | 4  |
| AB9KA Ham IQ Refresher    | 5  |
| For Sale                  | 6  |
| Iss Contact               | 7  |
| IQ Answers                | 11 |
| Membership App.           | 12 |

#### • NEXT MEETING

##### • Friday

- May 11, 2007
- LOCATION
- *St. Anthony Medical Center*
- *St. Anthony Room #1041*
- *5666 E. State Street*
- *Rockford, IL*

To get to the meeting room go to the main entrance, turn right at the desk- go to the end of hall to the Meeting rooms.

## From the Desk of the Vice President.....

Well I took the Generals test and passed. I can't wait to make my first contact . I am looking for ideas for the tech portion of the meeting. If anyone has a topic or a guest speaker please contact me @ 847-890-9185 or on our repeater as I have my HT on all day. I 'm sorry that I seem to be a vp in absence. However, my grandson was diagnosis with a rare form of M.S. and we were at the hospital. I fully intend to make this next one barring any seen or unseen cosmic event.

73's  
Bob Neumann W9TZU

### **FRIDAY MORNING BREAKFAST**

Meets every Friday morning from 8 am until about 9:30 am. An informal gathering of ham folks, no affiliations necessary, good food and good company. Everyone is welcome to attend.

*“Red Flame Family Restaurant” 915 S. Alpine Rd  
Across from Alpine Park*

## Secretary's Report

April 13, 2007

The meeting was called and the reports of the secretary and treasurer were read and approved.

There will be a meeting of Saturday to setup for the ISS contact. Dan will be in charge of the roof.

1200 kids are invited for a 45 minute contact and explanation. Discussed putting on ATV demonstration at fn fair and getting media coverage for ISS. The passes are every 1:34 after 6pm and start on ~146.803 mhz and move down to ~146.793mhz at end of pass.

There is an Adler balloon launch on April 15th.

Field Day will be the last full weekend of June (Weekend of 23rd). We have a food chairman. Jope Perry will be Field Day Chairman. Popups, tents, and small trailers are allowed on the grass. Motorhomes and vehicles must stay on the parking lot.

Breakfast in the park is Jun 9th. Sue KC9JDT is chairman.

The heritage run and the walk America are coming up. We need a waterfront chairman.

Submitted by Chuck Derwent K9SAN, Sec.

## RARA Officers and Board Positions 2007

### Officers

Don Russell-KB9AYF-President

Bob Neumann-W9TZU-Vice President

Chuck Derwent-K9SAN-Secretary

Gene Harlan-WB9MMM-Treasurer

### Board Members

Carl Cacciatore-W9TQ

Kurt Eversole-KE9NJ

Shari Harlan-N9SH

Dan Hunt-KC9ATR

**Christi Russell-KC9HUE-Editor**

## AMATEUR RADIO EXAM NOTICE

April 21st there were 5 applicants resulting in 3 new Technician and 2 upgrades

Robert Ditzler - New Technician

Datha Olney - New Technician

Jason Robbins - New Technician

Steven Finger KC9JDP General

William Spears Jr KB9OPC General

Northern Illinois Volunteer Examiners will be holding the next Amateur Radio exam session in Rockford, IL on Saturday, May 19, 2007.

Location:

St. Anthony Hospital

5666 E. State Street

Rockford, IL

Exams will be held in the St Francis Room (just right of the front entrance after you enter).

Check-in is from 9:00 AM til 10:30 AM.

### What You Need To Bring To A W5YI-VEC Session

1. Your original Amateur License (unexpired or within the 2 year grace period) and a copy to attach to the paperwork.
2. Any valid CSCE that you are using for credit. Again the VE's have to see the original and have a copy to attach to the paperwork.
3. Two forms of Identification with your signature on them. One must be a picture ID (drivers license, passport, school ID, library card, credit card, etc.)
4. Test Fee \$14.00 cash or check. (please make checks payable to W5YI-VEC)

### Contact Information

Randy Scott, W9HL

W9HL@arrl.net

815-877-4328

# AB9KA HAM I-Q Refresher

## Answers on Page

### Technician

How much power should you use to transmit when using an amateur satellite?

- A. The maximum power of your transmitter
- B. The minimum amount of power needed to complete the contact
- C. No more than half the rating of your linear amplifier
- D. Never more than 1 watt

### General

What type of power supply circuit is often used to provide over voltage protection at its output?

- A. Crowbar
- B. Circuit breaker
- C. Ferrite transformer
- D. Buck-out transistor

### Extra

When designing an op-amp RC active filter for a given frequency range and Q, what steps are typically followed when selecting the external components?

- A. Standard capacitor values are chosen first, the resistances are calculated, then resistors of the nearest standard value are used
- B. Standard resistor values are chosen first, the capacitances are calculated, then capacitors of the nearest standard value are used
- C. Standard resistor and capacitor values are used, the circuit is tested, then additional resistors are added to make any adjustments
- D. Standard resistor and capacitor values are used, the circuit is tested, then additional capacitors are added to make any adjustments

## Answers on page 11

**The following items are being offered for sale:**

2.4 Ghz Parabolic BBQ Grill antenna. Wireless Internet? Originally purchased from Bob Myers and was never mounted. Price \$50.00

Radio Shack Digitraveler GPS (part #20-1601). This is a hockey puck GPS unit that will provide NMEA 0183 output. Includes a suction cup windshield mount. Perfect for use in a mobile APRS tracker. Requires 3 AAA batteries, or an external 5 volt power source. Price \$35.00

Diamond X-50 2m/70cm fiberglass vertical antenna. Originally purchased in an estate sale and never used. Some minor paint is flaking off at the very end of the antenna, but otherwise appears to be in good condition. Price \$60.00

Anttron 17 meter short whip mobile antennas (qty 2). Including a tower mounting bracket. All in new condition. This will make a 17 meter dipole antenna. Price \$45.00

2 Meter, 4 element beam antenna, 48 inch boom. Appears similar to KLM 2M4. Small enough for fox hunting, Like new. Price \$70.00

Kantronics KAM Plus TNC for 1200 baud VHF and HF digital modes, Firmware V8.0P Price \$100.00

Kenwood Phone Patch controller, PC-1A, Price \$20.00

If interested in any of these items contact Chuck Gooden, N9QBT at [chuckg@insightbb.com](mailto:chuckg@insightbb.com) or 815-332-3203

## ISS Contact a Success!

### CHRISTIAN LIFE SCHOOL ISS CONTACT A SUCCESS

Three years ago I asked Christy Saunders, who was then our grandson, Dustin's fifth grade teacher at Christian Life, if she would be interested in having her students contact the International Space Station. Christy was very excited about this prospect. We then went to the elementary principal, Rhonda Kluck, and she said, "We have to do that!" So we began the application process. I found out at the Starved Rock hamfest that our application had been accepted. This began the three year waiting period.

We actually heard nothing during this period until the fall of 2006 when we got an email from Rosalie White, K1STO, asking if we were still interested in the contact. Of course the answer was yes. Still we did not hear very much until January 2007 when we got a prospective date of the week of February 26th. We then started having meetings to prepare for this date. A group of hams met with a maintenance person from the school to find the best route for the antenna wires to come into the church building. Originally this event was not going to be a whole school event, but as the time got closer the staff at Christian Life thought that this was such a once-in-a-lifetime event they wanted the whole school to be present. Our original set-up date was to be February 24th. This was the weekend in February that we had blizzard warnings, and Gene was in Iowa. We found out about two weeks before the date that it was a no-go. Actually a sigh of relief could be heard, especially since no one was looking forward to putting up antennas in the snow. The waiting went on.

Finally in March our mentor Charlie Sufana, AJ9N, told us we were slated for a three day window the week of April 23rd. We got Wednesday April 25th at 2:21 P.M. On Saturday April 21st the work began in earnest getting all of the equipment set up. Charlie, AJ9N, came from Indiana and brought antennas, coax, rotors and rotor controls and radios. Gene and I supplied our Yaesu 847 for IRLP and Jim Zahrndt, KF9AU supplied his 847 as a backup radio just in case Charlie's failed. The team of workers gathered at 8:30 A.M. on the 21st for breakfast at the church (great place for breakfast!) and then proceeded to get everything set up—they worked all day finishing up at 6 P.M. Before they left they had to pull all of the antenna wires back up onto the catwalks above the church so they would not be visible during the church services held on Sunday. Charlie went back home on Saturday evening.

On Wednesday April 25th we met at the church again for breakfast around 8:30. Charlie was coming from Indiana for the day to help us get things finished up and tested. This was an absolutely great day for amateur radio in the Rockford area. We got some really positive media coverage, and I really cannot say enough about the staff at Christian Life School who were so eager for this to happen. I may have been the one that was seen on camera, but what I did could not have happened if the group that was behind the scenes had not worked so hard. This was truly a group effort and Gene and I would like to thank Jim Zahrndt, KF9AU, Paul Franklin, K9RNR, Alvin Alexander, KC9GIO, Kurt Eversole, KE9NJ, Robert Larson, KC9ICH, and his wife Shannon, Dan Hunt, KC9ATR, John Auerswald, KA9SOG, Mikayla Auerswald, KC9HVQ, Karl Auerswald, KC9HVR, Charlie Sufana, AJ9N, Chuck Ingle, AB9KA, Don Russell, KB9AYF, Gene Stankiewicz, KA9BOD, Joe Perry, KB9MTH, John Cottner, KC9IED, Rich Ludwig, K9PK, Richard Nelson, N9ZO, Tom Weltzer, W9TMW, Wayne Hansen, KA9IMX and Larry Alex, KB9KCK for all of their help. Each of us had there part in this event to make it work and each one did their job very well.

(continued on page 8)

## ISS Contact Part 2

Each of us had their part in this event to make it work and each one did their job very well.

Many comments came in from people at the school, such as:

“Definitely very cool. Almost as cool as that time when I was visited by space aliens, or was that illegal aliens? Oh, well. Never mind that. Thanks for your hard work on putting this together.”

“I wanted to thank you for all your efforts in getting the special Space Station Assembly arranged. My son came home from school today just bubbling over with excitement about the things he learned today.”

“Thank you for your hard work and desire to see our contact with the ISS come to fruition! Hearing Suni’s voice impacted me more than I had anticipated – certainly something I will remember always!”

We are getting together SWL cards for the guys who want them to send in along with the QSL cards from the students. If you want an SWL card get them to either Gene or me very quickly so they can be sent off with the school’s cards.

Information for a SWL card – all that listened there can get one:

Name:

Call (if you have one):

Confirming QSO with: NA1SS

Day: 25 Month: 4 Year: 2007

UTC Time: 19:21

Frequency: 145.8 MHz

RST: 59

Mode Voice or FM

QSL: Please

The above can be as simple as putting the above information on a sheet of paper. It does not have to be an actual “QSL” card.

One of the very best things to come from this event is that the teacher, Christy Saunders, and several students want to get their amateur radio license! Christy wants to talk about having a class at the school. Now this makes this contact an even bigger success.

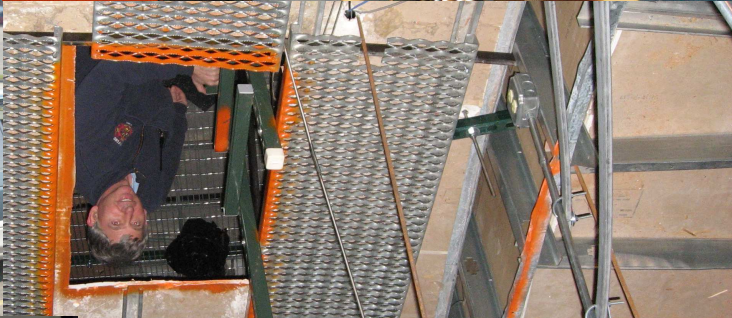
73,

Gene, WB9MMM and Shari, N9SH

(Pictures on page 9)



# ISS Contact Pictures



ISS014E19466

Each of us had there part in this event to make it work and each one did their job very well.

Many comments came in from people at the school, such as:

“Definitely very cool. Almost as cool as that time when I was visited by space aliens, or was that illegal aliens? Oh, well. Never mind that. Thanks for your hard work on putting this together.”

“I wanted to thank you for all your efforts in getting the special Space Station Assembly arranged. My son came home from school today just bubbling over with excitement about the things he learned today.”

“Thank you for your hard work and desire to see our contact with the ISS come to fruition! Hearing Suni’s voice impacted me more than I had anticipated – certainly something I will remember always!”

We are getting together SWL cards for the guys who want them to send in along with the QSL cards from the students. If you want an SWL card get them to either Gene or me very quickly so they can be sent off with the school’s cards.

Information for a SWL card – all that listened there can get one:

Name:

Call (if you have one):

Confirming QSO with: NA1SS

Day: 25 Month: 4 Year: 2007

UTC Time: 19:21

Frequency: 145.8 MHz

RST: 59

Mode Voice or FM

QSL: Please

### RARA Repeaters

**146.610 - ENC/DEC pl 114.8 W9AXD**

**147.000 + ENC/DEC pl 114.8 W9AXD**

**223.880 - ENC/DEC pl 118.8 W9AXD**

**ATV** input 1250 Mhz/ 434 Mhz W9ATN  
output 421.25 Mhz

### Editors Note

If you would like to have something published , please email KC9HUE at [chilly73@gmail.com](mailto:chilly73@gmail.com)

# RARA Mission Statement

**A member association with common interest of public service to the community  
through the use of amateur radio.**

## Answers to I-Q Refresher

### Technician

How much power should you use to transmit when using an amateur satellite?

- B. The minimum amount of power needed to complete the contact

### General

What type of power supply circuit is often used to provide overvoltage protection at its output?

- A. Crowbar (an SCR is gated into conduction by overvoltage, which shorts the supply & blows the fuse)

### Extra

When designing an op-amp RC active filter for a given frequency range and Q, what steps are typically followed when selecting the external components?

- A. Standard capacitor values are chosen first, the resistances are calculated, then resistors of the nearest standard value are used

**RARA BOARD MEETING MEETS ON THE LAST TUESDAY OF THE MONTH AT 7 PM**

**St. Anthony Medical Center 5666 E. State St. Rockford, IL**

Exams will be held in the St Francis Room (just right of the front entrance after you enter).



P.O. Box 8465, Rockford, IL 61126  
Email: [chilly73@gmail.com](mailto:chilly73@gmail.com)  
Web: [www.w9axd.org](http://www.w9axd.org)

| <b>Nets</b>   |         |                 |
|---------------|---------|-----------------|
| Thursday 8PM  | Saturn  | 146.610 - 114.8 |
| Monday 8PM    | 2 Meter | 146.610 - 114.8 |
| Thursday 7 PM | ARES    | 147.195 + 114.8 |

**April 2007**

place address label here

## ROCKFORD AMATEUR RADIO ASSOCIATION MEMBERSHIP APPLICATION

Single Adult: \$25.00 Adult w/Family: \$30.00

Single Senior: \$15.00 Senior w/Family: \$20

Student: \$15.00

Above rate includes the RARA monthly newsletter, Ham Rag, via email.

Ham Rag Via U.S. Postal Service: \$12.00 extra

Name \_\_\_\_\_ Call Sign \_\_\_\_\_

Address \_\_\_\_\_

City \_\_\_\_\_ State \_\_\_\_\_ Zip \_\_\_\_\_

Home Phone \_\_\_\_\_

Work Phone \_\_\_\_\_

Email \_\_\_\_\_

Renewal \_\_\_\_\_ New \_\_\_\_\_ Retired \_\_\_\_\_

Radio Interests \_\_\_\_\_

Other Interests \_\_\_\_\_